



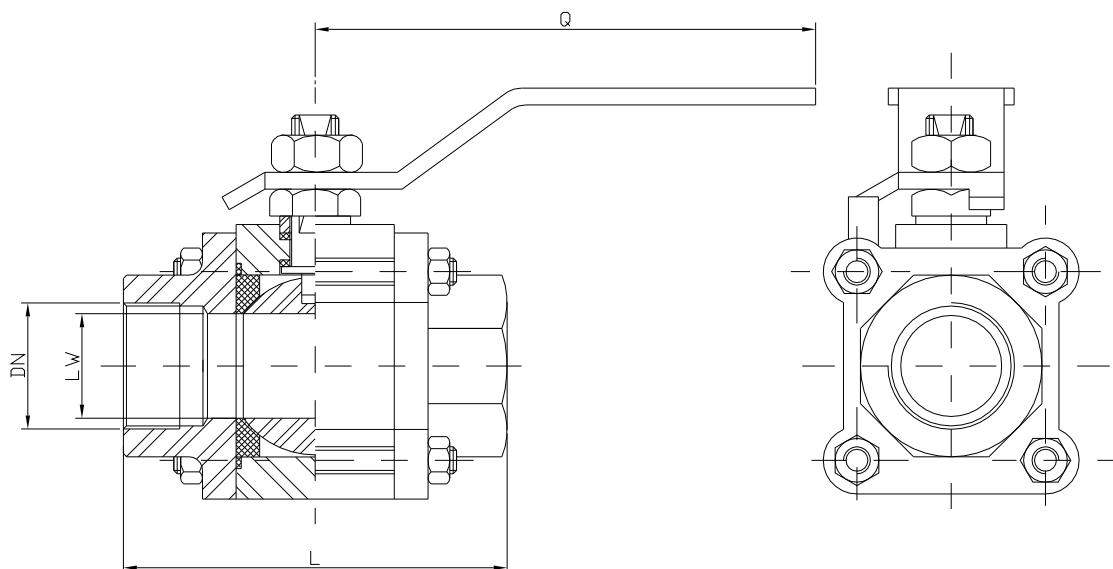
ST-880 / 881

⇒ VÁLVULA DE ESFERA - 2 VIAS - TRIPARTIDA
ANSI 300 / 800 - BSP - NPT - SW - BW

⇒ ACIONADA POR ALAVANCA, REDUTOR MANUAL, ELÉTRICO OU
ATUADOR PNEUMÁTICO



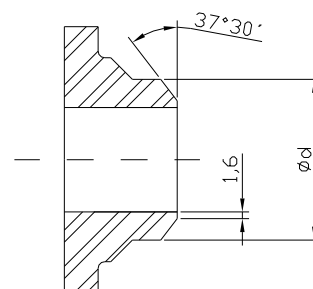
VÁLVULAS INDUSTRIAIS



ST-880 ANSI 300 – PASSAGEM PLENA

DN	LW	D	d	L	A	H	Q
1/4"	11.0	14.1	13.7	65.2	9.6	46.0	113.0
3/8"	11.0	17.5	17.1	65.2	9.6	46.0	113.0
1/2"	14.2	21.7	21.3	70.8	9.6	48.0	113.0
3/4"	20.5	27.0	26.7	93.7	12.7	62.0	146.0
1"	25.4	33.8	33.4	106.4	12.7	67.0	146.0
1.1/4"	31.7	42.5	42.2	115.0	12.7	79.0	178.0
1.1/2"	38.1	48.6	48.3	126.4	12.7	89.0	178.0
2"	50.8	61.1	60.3	142.8	15.8	142.0	230.0
2.1/2"	63.5	73.8	73.0	169.8	15.8	142.0	230.0

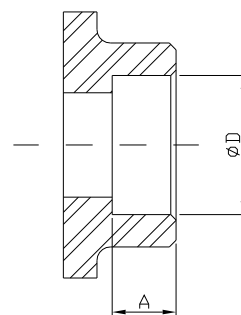
DETALHE PARA EXTREMIDADE TIPO SOLDA DE TOPO (BW)



ST-881 ANSI 300 – PASSAGEM REDUZIDA

DN	LW	D	d	L	A	H	Q
1/2"	11.0	21.7	21.3	65.2	9.6	46.0	113.0
3/4"	14.2	27.0	26.7	70.8	12.7	48.0	113.0
1"	20.5	33.8	33.4	93.7	12.7	62.0	146.0
1.1/4"	25.4	42.5	42.2	106.4	12.7	67.0	146.0
1.1/2"	31.7	48.6	48.3	115.0	12.7	79.0	178.0
2"	38.1	61.1	60.3	126.4	15.8	89.0	178.0
2.1/2"	50.8	73.8	73.0	142.8	15.8	142.0	230.0
3"	63.5	89.8	88.9	169.8	15.8	142.0	230.0

DETALHE PARA EXTREMIDADE TIPO SOLDA DE ENCAIXE (SW)



ST-880 ANSI 800 – FORJADA

DN	LW	D	d	L	A	H	Q
1/4"	11.0	14.1	13.7	73.0	9.6	52.0	128.0
3/8"	11.0	17.5	17.1	73.0	9.6	52.0	128.0
1/2"	14.2	21.7	21.3	73.0	9.6	52.0	128.0
3/4"	20.5	27.0	26.7	95.0	12.7	59.5	150.0
1"	25.4	33.8	33.4	106.5	12.7	64.5	150.0
1.1/2"	38.1	48.6	48.3	126.5	12.7	82.0	185.0

ROSCA BSP. CONFORME DIN 259
ROSCA NPT CONFORME ANSI B2.1

SOLDA DE ENCAIXE (SW) CONFORME ANSI B16.11
SOLDA DE TOPO (BW) CONFORME ANSI B16.25