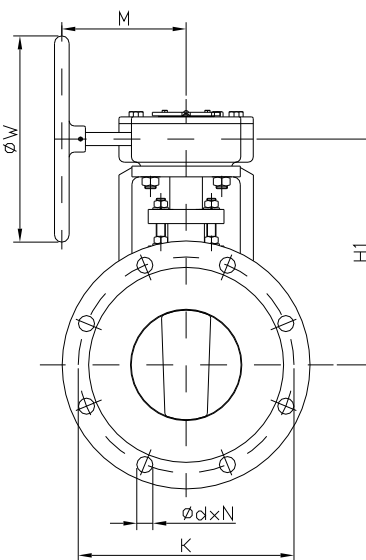
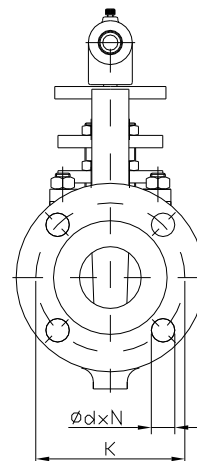
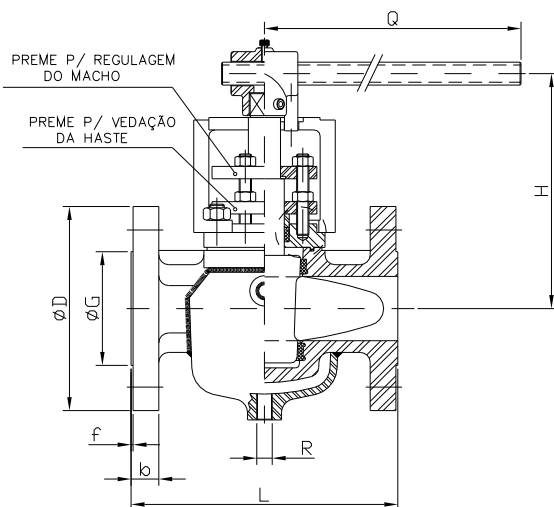


ST-971

- ➡ VÁLVULA MACHO - 2 VIAS - BUCHA - SEMI-ENCAMISADA
ANSI 150 / 300
- ➡ ACIONADA POR ALAVANCA, REDUTOR MANUAL, ELÉTRICO OU
ATUADOR PNEUMÁTICO



VÁLVULAS INDUSTRIAIS



LEGENDA																		
<input type="checkbox"/>	PADRÃO																	
<input type="checkbox"/>	SOB ENCOMENDA																	
CORPO/ CAMISA		FERRO NODULAR	ASTM-A 216 WCB	ASTM-A 351 CFB	ASTM-A 351 CFBM	ASTM-A 351 CF3	ASTM-A 351 CF3M	ASTM-A 351 CA15	PTFE (PURO)	PTFE+ FRABITE	PTFE+ CARB GRAFITE	PTFE+ FIBRA DE VIDRO	PTFE+ FIBRA VIDRO+ GRAFITE	GRAFOIL	SAE 1020	SAE 304	SAE 316	OUTROS MATERIAIS
TAMPA																		
MACHO																		
PREME GAXETA																		
LANTERNA																		
BUCHA																		
GAXETA																		
VEDAÇÃO DO CORPO																		
ALAVANCA																		
PRISIONEIRO TIPO ESTOJO																		

ANSI 150 LBS

DN	ØD	b	K	d X N	G	f	L	ALAVANCA		REDUTOR MANUAL			R NPT
								H	Q	H1	ØW	M	
1/2"	88.9	11.1	60.5	15.9 x 4	35.0	1.6	107.9	115.0	180.0	-*-	-*-	-*-	3/8"
3/4"	98.6	12.7	69.9	15.9 x 4	42.9	1.6	117.5	115.0	180.0	-*-	-*-	-*-	
1"	108.0	14.3	79.2	15.9 x 4	50.8	1.6	127.0	137.5	260.0	-*-	-*-	-*-	
1.1/4"	117.4	15.9	88.9	15.9 x 4	63.5	1.6	165.1	147.5	360.0	-*-	-*-	-*-	1/2"
1.1/2"	127.0	17.5	98.6	15.9 x 4	73.2	1.6	165.1	147.5	360.0	-*-	-*-	-*-	
2"	152.4	19.0	120.7	19.1 x 4	92.1	1.6	177.8	194.0	430.0	-*-	-*-	-*-	
2.1/2"	177.8	22.2	139.7	19.1 x 4	104.7	1.6	203.2	230.0	430.0	-*-	-*-	-*-	
3"	190.5	23.8	152.4	19.1 x 4	127.0	1.6	203.2	230.0	430.0	-*-	-*-	-*-	
4"	228.6	23.8	190.5	19.1 x 8	157.2	1.6	228.6	256.0	600.0	222.5	170.0	120.0	3/4"
6"	279.4	25.4	241.3	22.2 x 8	215.9	1.6	266.7	335.0	930.0	326.0	350.0	180.0	
8"	342.9	28.6	298.5	22.2 x 8	269.7	1.6	292.2	-*-	-*-	345.0	350.0	180.0	
10"	406.4	30.2	361.9	25.4 x 12	323.8	1.6	330.2	-*-	-*-	455.0	400.0	260.0	

ANSI 300 LBS

DN	ØD	b	K	d X N	G	f	L	ALAVANCA		REDUTOR MANUAL			R NPT
								H	Q	H1	ØW	M	
1/2"	95.3	14.2	66.7	15.9 x 4	35.0	1.6	139.7	115.0	180.0	-*-	-*-	-*-	3/8"
3/4"	117.3	15.7	82.6	19.1 x 4	42.9	1.6	152.4	115.0	180.0	-*-	-*-	-*-	
1"	124.0	17.5	88.9	19.1 x 4	50.8	1.6	165.1	137.5	260.0	-*-	-*-	-*-	
1.1/4"	133.4	19.1	98.4	19.1 x 4	63.5	1.6	190.5	147.5	360.0	-*-	-*-	-*-	1/2"
1.1/2"	155.6	20.6	114.3	22.2 x 4	73.2	1.6	190.5	147.5	360.0	-*-	-*-	-*-	
2"	165.1	22.2	127.0	19.1 x 8	92.1	1.6	215.9	194.0	430.0	-*-	-*-	-*-	
2.1/2"	190.5	28.4	149.2	22.2 x 8	104.7	1.6	282.6	230.0	430.0	-*-	-*-	-*-	
3"	209.6	28.6	168.1	22.2 x 8	127.0	1.6	282.6	230.0	430.0	-*-	-*-	-*-	
4"	254.0	31.8	200.0	22.2 x 8	157.2	1.6	304.8	256.0	600.0	222.5	170.0	120.0	3/4"
6"	317.5	36.6	269.7	22.2 x 12	215.9	1.6	403.2	335.0	930.0	326.0	350.0	180.0	
8"	381.0	41.1	330.2	25.4 x 12	269.8	1.6	419.1	-*-	-*-	345.0	350.0	180.0	

NOTAS: 1- DN 1.1/4" - SÃO UTILIZADOS FUNDIDOS DN 1.1/2" COM FLANGES USINADOS PARA 1.1/4".
 2- DN 2.1/2" - SÃO UTILIZADOS FUNDIDOS DN 3" COM FLANGES USINADOS PARA 2.1/2".